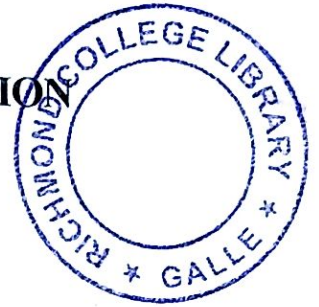


SOUTHERN PROVINCIAL DEPARTMENT OF EDUCATION

**MID YEAR TEST - 2019**

**GRADE - 6**

**GEOGRAPHY**



Name/ Index No :- .....

Time : 2 Hours

**Part - I**

● For questions No. 01- 05 select the most suitable answer and underline.

- (01) The child who gets his basic education from home, receives his formal education from the,  
(1) temple. (2) village.  
(3) society. (4) school.
- (02) The administration unit made up of a few Grama Niladhari divisions is,  
(1) a district. (2) a divisional secretariat division.  
(3) a town. (4) a province.
- (03) What is the name used for the condition of the atmosphere that prevails for a short period of time in a particular area?  
(1) climate. (2) weather.  
(3) precipitation. (4) air pressure.
- (04) The answer with the group of migrant birds from various species of birds in Sri Lanka.  
(1) Paradise fly catcher (Suduredihora), Parrot, Crow pheasant.  
(2) Paradise fly catcher, Indian Pitta, Minah.  
(3) Paradise fly catcher, Indian Pitta, Sivuru hora.  
(4) Sivru hora, Parrot, Minah.
- (05) The weather element , speed of the wind is measured by a,  
(1) anemometer. (2) rain gauge.  
(3) wind direction indicator. (4) temperature.

● For statements from No. 6 to 10, put a (✓) if the answer is correct and put a (x) if it is not correct within the bracket provided.

- (06) We can use a compass to find the direction. (.....)
- (07) A dry season exist when there is high temperature and strong sunshine. (.....)
- (08) The crow - pheasant does not destroy snails that damage cultivations. (.....)
- (09) Animal husbandry and fishing industry are carried out under land utilization for agriculture. (.....)
- (10) Education, Health, Postal and transportation come under public services. (.....)

- For questions from No. 11 to 15, select the suitable answer from the answers given within brackets.

(11) My school is located in the ..... Province.

(Northern / Southern / North Western)

(12) When drawing a plan of the school, all the features are shown using different.....

(pictures / symbols / boundaries)

(13) ..... is famous for cane products in Sri Lanka.

(Radawadunna / Pilimathalawa / Moratuwa )

(14) Unlimited sand mining in rivers lead to .....

(landslides / floods / water shortage)

(15) Production of sweet meats comes under ..... industries.

(small scale / service / agriculture)

- For questions from No. 16 - 19 Use appropriate words to complete the sentences.

(16) Features in a map are shown as plain figures and features on land are in .....

(17) People living in a house located on a hill can observe the ..... very well.

(18) Bees are insects that help .....

(19) ..... is measured by units of Celsius and Fahrenheit.

(20) Join the following two columns appropriately

Masks

Dumbara

Mats

Moratuwa

Furniture

Ambalangoda

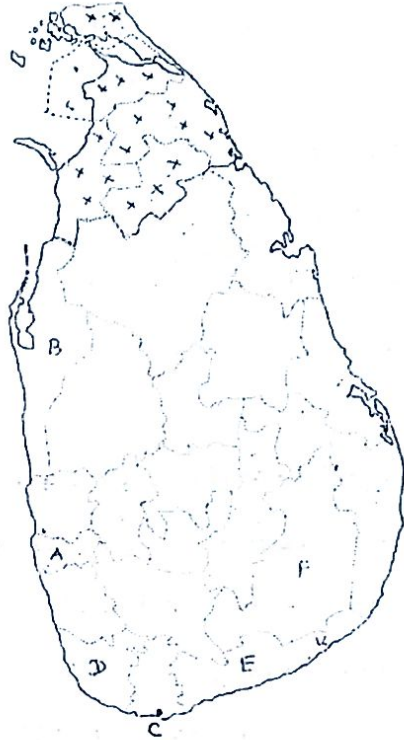
## Part - II

- 1<sup>st</sup> question is compulsory.
- Select and answer 4 questions from question No. 02 to 07.
- Altogether you have to answer 5 questions.

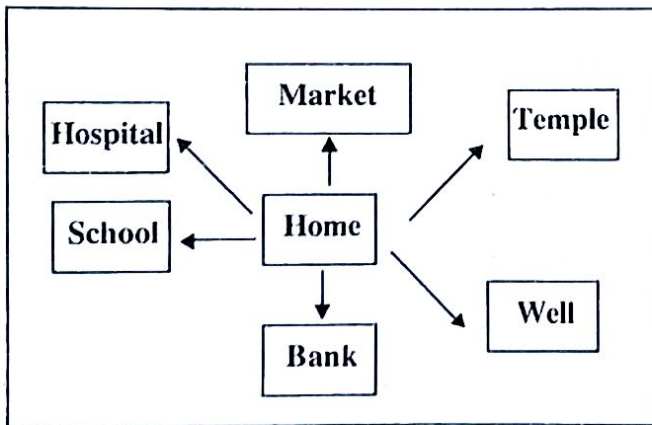
(1) (a) Use the map provided below to answer the following questions.

- (i) Which letter indicates the Colombo district?
- (ii) Name the shaded province in the map.
- (iii) What is the city indicated by the letter "C"?
- (iv) Which letter indicates Galle?
- (v) Which letter indicates Hambantota?
- (vi) Name a district belonging to the Central province.

(1x6= 6 marks)



(b) Answer the questions referring the plan given below.



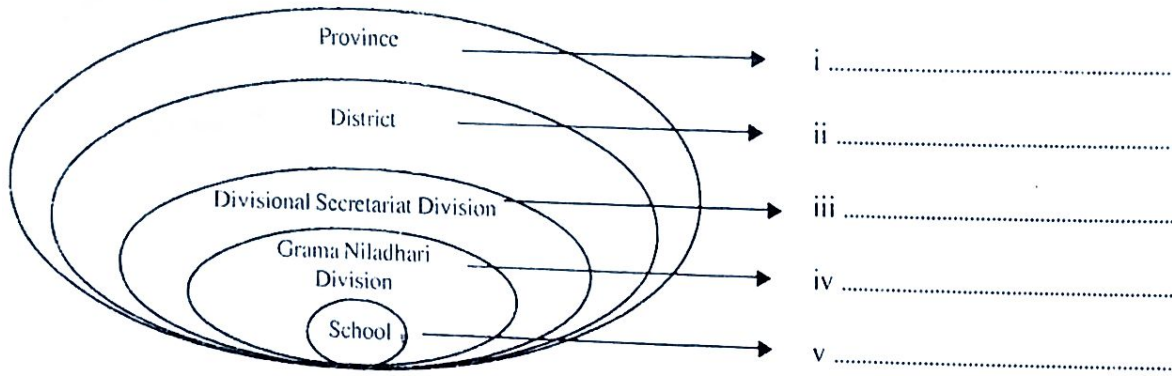
Name the directions of the buildings from the house according to the above plan.

- (i) ..... is located in the North direction from the house.
- (ii) ..... is located in the South direction from home.
- (iii) ..... is located in the Western direction from home.
- (iv) ..... is located in the North East direction from home.
- (v) ..... is located in the North West direction from home.

(1x6 = 6 marks)



- 2) (i) The location of your school is shown below according to the administrative hierarchy. Fill the diagram using information of your school.



- (i) Write 4 sentences about the location of your school. (2x4 = 8 marks)

- 3) Given below is a weather report. Answer the questions by referring it. (4 marks)  
 During the last 24 hours ending at 9. a.m. today, the maximum rainfall of 300 mm was reported from Deniyaya, while the maximum temperature of 35°C was reported from Anuradhapura & the minimum temperature was reported from Nawalapitiya. There will be heavy rains in the South & West due to South Western winds.

- (i) Write three weather elements in this report. (3 marks)  
 (ii) How many mm is the maximum rainfall reported from Deniyaya? (1 marks)  
 (iii) From which direction do the winds flow in to the country? (2 marks)  
 (iv) Which area had the minimum temperature? (2 marks)  
 (v) Which areas can expect heavy rainfall? (2 marks)  
 (vi) From where does the maximum temperature is reported and how much is that? (2 marks)

- 4) (i) State three topographical features in your immediate surroundings. (3 marks)  
 (ii) (a) what is the nature of the immediate surrounding of your school? (1 marks)  
 (b) Name three animals coming to add beauty to the immediate surroundings of your house. (3 marks)

- 5) (i) (a) Write a crop cultivated in following areas by giving attention to land utilization in various ways.

Area	Crops cultivated
1. River Valleys	.....
2. Mountain areas	.....
3. Coastal areas	.....

- (ii) (a) Mention 2 natural resources in your area that can be used for industries. (3 marks)

- (b) Write 2 industries that can be done using those resources. (4 marks)

- (iii) Write 3 benefits received from the industries in your area. (5 marks)

- 5) (i) Write three services provided free of charge by the government. (3 marks)

- (ii) State 2 services you get from the health service. (4 marks)

- (iii) Write down two of your duties as you enjoy those services. (5 marks)

- 7) (i) Which institute provide information with regard to weather in Sri Lanka? (3 marks)

- (ii) (a) Where is it located? (2 marks)

- (b) State two features that can be seen in the environment before raining. (2 marks)

- (iii) State three advantages that you can gain by knowing about weather in advance. (5 marks)